

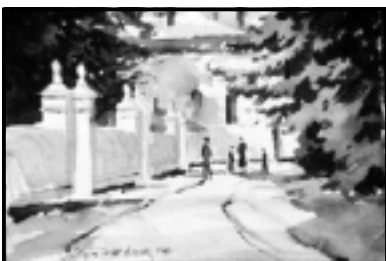


# Pat Weaver

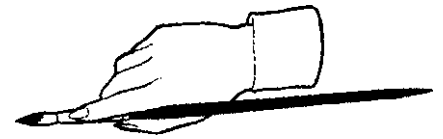
Pat Weaver is a true ‘paint what you love’ painter – her cows, roosters and other farm animals are stunning examples of barnyard beauty and her paintings have garnered her signature memberships and won many awards from the Florida Watercolor Society and the Georgia Watercolor Society. She holds associate memberships in the Catherine Lorillard Foundation, New York and the American Watercolor Society. Her watercolors splash colorfully across the paper in a direct and spontaneous manner – she knows how each comb, ear, eye or hock looks on her animals and places them in an immediate manner on her paper in a matter of minutes. See this watercolor wizard exert her powers on Tuesday, March 21, at ArtServe Auditorium, 7:00 P.M.!



Here are a few  
examples of  
Pat's work



# From the President's Sketchbook



After a very lively discussion at the last board meeting, it was decided that we have outgrown our bylaws. They are supposed to work for us and they have actually been working against us. This has been particularly evident in the prospectus from the last two Members Only Shows that stated entries needed to be in watercolor.

Our by-laws state that watercolor painting is defined as painting in an aqueous medium on paper. We think that definition needs to be eliminated or updated. A committee has been formed to make recommendations for changes, and you will be notified by mail of these changes, given a chance to digest them and then asked to vote for or against them at a general meeting. At that time we will need a two-thirds approval for adoption. If you have any recommendations for changes, please email me – [rolson26@msn.com](mailto:rolson26@msn.com) . After much consideration, the board feels we have too many rules and want the society to be a little more relaxed. - Dot Olson

## AHHHHH, WORKSHOPS

February may be the year's shortest month, but it was fully filled with the Sharon Pitts workshop. Coming together with ideas, talents, questions and the perfect person to set us on track, our week of painting was a sigh of satisfaction.

Sharon gave us permission to try new ideas. She encouraged us to use our ability to see small things in a way that made those new ideas work. Beginning with flora from Jesse's Nursery, picked and propped by Jennifer and Sharon, the old idea of painting flowers took on a more exciting prospect. There were three subjects: crotons, orchids and

without real ones to see, irises. Some industrious students brought their own plants. Putting a border around the painting from the beginning and creating the construction of design within, was a challenge to most and a revelation to all. You can paint flowers that don't look like the same-ole', same-ole'! By the end of the much too short four days, we each had at least two paintings to mat and frame.

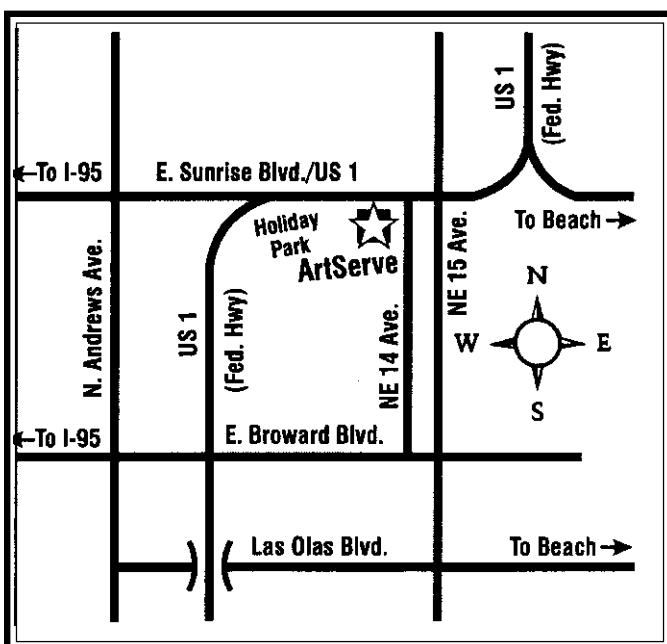
Perhaps the words of one participant sums the feelings of all: The Sharon Pitts workshop was one of the best workshops that I've taken. If such a thing is possible, I liked how she taught us the process of being an artist. She guided us through choosing design elements and watercolor techniques to come up with our own successful and unique original work.

Thanks to everyone who came on time, worked and remained attentive, and, most of all, shared the luscious lure of watercolor.

So now we go on to March with Pat Weaver. This workshop is filled to overflowing, and anticipation is upon us. We have had requests for places in this week-long workshop from all over the northeast. Hopefully, all you members are aware of how lucky we are to be in Ft. Lauderdale and have the chance to work with the best.

Don't forget the 8<sup>th</sup> and 9<sup>th</sup> of April. This sleeper may wake up a prince!

- Mary Blumberg



# Harriet Mitchell Award

Patricia Kugelman, daughter of Harriet Mitchell who was a longtime member of Gold Coast Watercolor Society, provided the first Harriet Mitchell award to honor the memory of her mother. The award was first presented at the 2006 Members Only Show and will accrue two points toward Signature membership.

After college, her mother had a long career as an accountant, but she had the soul of an artist! She loved painting and studied at the Silvermine School in Connecticut. Following her retirement, Harriet moved to Florida and settled in Fort Lauderdale. Ms. Mitchell joined GCWS in 1976 and was a fun-loving and enthusiastic member. Her background made her a logical choice to be treasurer of the club. In addition, her artistic talents won recognition and a number of awards in various exhibitions.

Harriet Mitchell died in May, 2005, but thanks to her daughter, Patricia, as well as other family members, friends and members of the Gold Coast Watercolor Society, her memory will live on in the Harriet Mitchell Memorial Fund. Gold Coast Members who added to the memorial established by Patricia and her family were: Rowena Smith, Harold Gunter, Phillip Markowski, Morris Green, Norma Haughout, Norma Sumner, Nedra Werne, and Francis Holman.

Patricia's address is 121 Tuscan Drive, Easton, CT 06612 if you would like to contact her.



Refreshments Chair, Bennie Edwards, welcomes all volunteers who bring food and/or drinks to our meetings.

Please call Bennie, 954-735-0360 ahead of time if you wish to be reimbursed. A receipt is necessary, too.

## Volunteer of the Month

**Susanna Clemm** has been a very active member of Gold Coast and deserves recognition. She volunteered to be in charge of the refreshments at the Schacknow exhibit when Joyce Lihan was not available. She also worked on the show and when the time of the exhibit was adjusted, she personally called all forty-five of the artists who had entered to make sure they were notified of the change.

## Classified Ads

**SELL IT!**

**Sun Eden portable easel – tripod, traveling adapter (holds a board) and palette shelf, etc., \$150 value, only \$100. Toni Sailer Eisenhauer 954 924 8382 or cell 954 559 2863**

Our ads do work! Delone Stone had her jacket returned after several months loss and Lee Butler sold her file drawers!

Edith Wagner, 9800 Sunrise Lakes BLVD. #149 – 104 Sunrise, FL 33322-6247 will take your ads for your idle equipment. \$5 for 18 words plus name and phone, such a bargain. To be sure it's in the next (Apr.) newsletter, she must have it by the 20th of March.

## MEMBERSHIP APPLICATION

**Please mail this filled out form with a check for dues: \$30 annual or \$300 lifetime or \$15 student made payable to Gold Coast Watercolor Society and mail to Membership Chair: Britt Silkey, 323 NW 105th Street, Miami, FL 33150. 305-754-5456.**

Name \_\_\_\_\_ Phone \_\_\_\_\_

Address \_\_\_\_\_ E-mail \_\_\_\_\_

City, State, Zip \_\_\_\_\_

Summer (if different) and dates \_\_\_\_\_

Please include a self-addressed envelope if you wish to receive a membership card.

# ???

## ASK ANNIE!

# ???

**QUESTION:** Stacked under my bed are more than a handful of paintings that are grossly over-painted. I have them out occasionally and see areas that work well, but is there a way to bring back some of the over-painted areas?

**ANSWER:** Welcome to the club! Over-painting is a curse we all suffer from. First I would go back for a second look. Muddy, dull, over-painted areas can sometimes be brought to life by introducing a strong dark (and I mean BLACK!) into the problem area. The contrasting values will make the problem seem light in comparison to your dark application.

If that doesn't work and the paint is recently applied, a good soaking and then scrubbing with a toothbrush may do the job except for areas where you have staining colors. If the paint has been down for some time, scrubbing won't do! Chinese white, white gouache or a new product called "Liquid Watercolor Paper" will work for small areas that you don't intend to paint over. As all three solutions are activated by water, painting over the area will dissolve the white and the area will become chalky.

I've had interesting results by applying white tissue paper over problem areas. The more applications of tissue, the lighter the area becomes. My favorite is to use gesso either full strength or diluted. It will not lift when painted over, but there will be some change in the way paint goes down as the gesso cuts absorbency and the paint lays on the surface. You can add liquid soap to your brush to break the surface tension or apply flat areas with a sponge roller. I wouldn't use white acrylic as it resists the watercolor unless you plan to finish the painting in acrylics.

There still is one other method that is the bane of credentials committees – that is to glue a piece of 100% rag bond paper (typing paper), either cut or torn, to your paper. Once dry, it has to be integrated into your painting by additional applications of paint. I have actually done paintings where at least a third of the surface was bond paper and it was almost undetectable.

Bernie read this and said, "Why don't they just flip the sheet and start over?" His insensitivity rivals Attila.

### NOMINATING COMMITTEE

*IT'S THAT TIME OF YEAR AGAIN!*

**Susanna Clem, Norma Sumner, Britt Silkey, Joan McGiver, Mary Blumberg and Bill Brown** have volunteered their services on the nominating committee – please be as willing to serve when they call you to fill the vacancies for next year!

## VIDEO LOAN LIBRARY

Now's your chance to clip this listing for future reference! Our video chair, Charlene Hamilton, has compiled an up-to-date listing for you and it won't be repeated until well into next year. The board has decided to buy only DVDs in the future, but the VCR recordings are still available. To rent any one of the items for one month, just write a \$100 check (to GCWS). Checks are held until you return the video. Checks are returned when you return the video or are placed on file for the year if you continue to rent one each month. Select videos at each meeting – Charlene sets up at the membership table as you enter the ArtServe auditorium. Remember, new checks need to be written each October to be valid for rental!

### New DVDs are:

Creating Multiple Glazes I and II	Catherine Anderson
Painting a dramatic Landscape	Mark Mehaffey
The Watercolorist's Year	Richard Taylor
Tuscan Textures	Judy Morris

### Other new purchases are:

Autumn Trees	Jerry McClish
The Figure in Watercolor	Charles Reid
Finding Direction in Your Painting	Skip Lawrence/Chris Schink
Designing Great Starts	Pat Dews
Jelly Bean Figures	Skip Lawrence
Achieving Luminosity	Jim Kosvanec

### Additional choices are:

Making Watercolor Glow	Don Andrews
Maine Quarry	Ed Betts
Watercolor and Collage	Gerald Brommer
Imaging in Watercolor	Gerald Brommer
Clayboard Techniques	Charles Ewing
Expand your Watercolor Horizons	Claire Dorst
Special Effects in Watercolor, Part I	Tom Lynch
Special Effects in Watercolor, Part II	Tom Lynch
Preliminary Color Studies, Part I	Tom Lynch
Preliminary Color Studies, Part II	Tom Lynch
Capturing Expression and Mood	Tom Lynch
Marketing Your Art	Tom Lynch
Contrast in Watercolor	Skip Lawrence/Chris Schink
Using Color as Value	Skip Lawrence/Chris Schink
Making Things Flat or Round	Skip Lawrence/Chris Schink
Watercolor Basics	Terry Madden
Correcting Techniques	Terry Madden
Watercolor	Barbara Nechis
Color for the Artist	Stephen Quiller
Flowers	Charles Reid
Nudes	Charles Reid
Portraits	Charles Reid
Masking and Pouring	Roland Roycraft
#1	Tony Van Hasselt
#2	Tony Van Hasselt
Capturing the Essence of the Bouquet	Janet Walsh
Interpreting Glass Containers	Janet Walsh
Use of Greens, Yellows and Whites	Janet Walsh
Vocabulary of Backgrounds	Janet Walsh
Drawings 1 and 2	Jerry McClish
Spoleto, Italy	Jerry McClish

# WHAT THE HECK ARE THEY TALKING ABOUT?

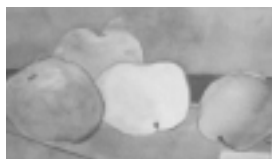
#7

## DEADLINE

Okay! I know you know what a deadline is! "postmarked by" and "received by".

Be sure to check which is listed if you are thinking of submitting work. If it's not specified, assume "received by" and you'll be on time for sure.

*From smART Business by Kathy Gulrich*



## CALENDAR 2006

### MARCH 2006

- 15 GCWS Board meeting 2:00P.M. ArtServe.  
All are welcome!
- 20 – 24 Pat Weaver Workshop, Kiwanis Club
- 21 Gold Coast monthly meeting  
ArtServe Auditorium 7 -9 P.M. *Tuesday*

### APRIL 2006

- 8 – 9 Nancy Maas Workshop, Kiwanis Club
- 12 GCWS Board meeting 2:00P.M. ArtServe.  
All are welcome!
- 18 Gold Coast monthly meeting  
ArtServe Auditorium 7 -9 P.M. *Tuesday*

## FRAMERS DISCOUNTS

**Carreno Art & Frame Inc.**  
40 E. Oakland Park Blvd.  
Ft. Lauderdale, FL 33334  
**954-561-7364**  
15% Discount

**Art and Frame Shop**  
1513 East Commercial Blvd.  
Ft. Lauderdale, FL 33064  
**Contact: Lisa Dodero**  
**954-771-7010**  
20% discount on all single custom framing, not including specials.  
Large orders will be automatically discounted. Turn around time is usually just a few days if product is in stock.

**House of 20,000 Frames**  
230 South Cypress Road  
Pompano Beach, FL 33060  
**Contact: Pete Santipadri**  
**954-782-5125**  
20% discount, fast turn around time, large in house stock supply. No credit cards.

**Artful Framer**  
260 S. University Drive  
Plantation, FL 33324  
**Contact: Patty and Steve Koch**  
**1-888-340-4278**  
[www.artfulframergallery.com](http://www.artfulframergallery.com)  
33% discount

**Pearl's**  
1033 E. Oakland Park Blvd.  
Ft. Lauderdale, FL 33334  
**Contact: Devonne Stots**  
**954-564-5700**  
[FtLMGR@PearlPaint.com](mailto:FtLMGR@PearlPaint.com)  
Offers a student discount on supplies if you bring in your GCWS card and the supply worksheet offered by the workshop leader. It's helpful for the workshop leader to give Pearl's advance notice of items not normally carried so they may be ordered in time for the workshop.

**Use your GCWS card to show your membership to access these recommended framers.**

Remember, when you are comparing frames, you need to compare "apples to apples". Some framers offer lighter weight frames or lighter mm. plexiglass than others do, so check on the specifics when you compare prices.

# OPPORTUNITIES

**Palm Beach Watercolor Society** is offering an Art Stroll, April 9, 10:00 – 3:00P.M. at Sugar Sands Park. Call Marilyn Young for more info and send \$10 to reserve your space to Maureen Sopourn, 245 N. Country Club Drive, Atlantis, FL 33462.

**Broward Art Guild HUMAN IMAGE** intake will be Sunday, March 19, 2:00-4:00P.M.

**The Oakland Park Art and Music Fest**, May 20, 9:00 – 6:00 will be held at 3800 N. Dixie Highway. One hundred dollars pays for tent and table. Entry deadline is May 1, 2006 – contact Ed Smith, Edwards@oaklandparkfl.org for additional information.

**Check out the premier South Florida Art Gallery** – Elaine Baker's Gallery at 608 Banyan Trail, Boca Raton, FL 561 241 3050! Examples of David Hockney, Joan Miro, and Janet Siegel Rogers and many others were available in the maze of individual galleries under one roof. An interesting sidelight was seeing three large paintings by Daniel Greene – portrait artist – using our own paint-in model, Randy, as a featured face in each painting! Another interesting artist featured 'touchable transformers' – think McDonald's kid's plastic treasures from the late 80's and 90's - cast into foot high metal shapes that snapped open, closed, stretched and folded wherever you touched them! This exhibit closes April 6, 2006.

**Last call – Paint the Town**, 2006, in St. Petersburg for three days, April 20 – 22. Deadline for entry: March 15, 2006. For more info - [www.allaprimafineart.com](http://www.allaprimafineart.com) or <http://pleinairflorida.org/>. This is a plein air competition.

**Old Davie School Historical Museum** offers small works by Bob Gross through March 17, 2006.

**Don't forget the King Tut Exhibit** at the Fort Lauderdale Museum of Art. Closing date is April 23.

**The Society of Four Arts Museum** in Palm Beach has a generous sampling from the Philadelphia Museum featuring such major artists as Sargeant, O'Keefe, Avery, Man Ray, Mary Cassatt and many others seldom seen in such a small, but complete grouping. Get there soon!

**Opening reception** for the Bonnet House "Impressions of Old South Florida" is March 23.

**Each fourth Monday**, the new Weston Art Guild meets at the Rick Case Hyundai meeting room.

**Hortt 45/Salon des Refuses** will be held at ArtServe. Entry deadline is May 1, 2006, \$50/two works, two more pieces, \$20. Obtain prospectus and entry forms at [www.browardartguild.org](http://www.browardartguild.org) or P.O. Box 936184, Hortt 45/ Broward Art Guild, Margate, FL 33093

The Arts Center / Old Forge, PO Box 1144, 3260 State Route 28, Old Forge, NY 13420 is offering the 25<sup>th</sup> Annual Adirondack National Exhibition of American Watercolors July – Oct. Slide entries must be sent by April 6, 2006, \$20 first slide, \$5 more for 2<sup>nd</sup> slide, members. Contact: 315 369 6411, email: [info@artscenteroldforge.org](mailto:info@artscenteroldforge.org)

**The Coral Springs Artist Guild** entries for "The Colors of Art" are due March 24. The show will be held at Coral Springs Museum of Art from April 7 to April 30. Contact 954 753 5533 for info.

**The City of Pompano Beach** offers artists free space to display and sell their work on the first Saturday of each month at the Green Market, just east of Dixie and one block north of Atlantic Blvd. on Flagler. Please call Margaret White, 954 941 1103 or Dan Hobby, 954 292 8040, before arriving to assure space is available because tables are at a premium.

**The 13<sup>th</sup> Annual Cornell Museum** All Florida Fine Art Exhibition has issued a call for slides and entries by March 20. Dates of the exhibition are late May – September 9, 2006. Visit [www.oldschool.org](http://www.oldschool.org) or call 561 243 7922 Ext. 305 for further information.

**Coral Springs Museum of Art** is offering an open figure class on Thursday nights from 6:30 -8:30 - call 954 340 5008 for more info.

The '**Dali on the Road**' show continues through May 20. Remember Family Fun Day - 2nd Saturday of each month, \$3 each, reservations requested.



## Volunteer of the Month

It is my understanding that we have Carol Thaw and a team of telephone callers to thank for trying to notify everyone that there would not be a November meeting. I heard that only one person showed up and that person did not have telephone service. Thanks, Carol and crew, for stepping in when there was a need and saving many people a needless trip through four way stoplights.

- Dot Olson



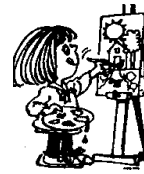
# PRESS RELEASES

A new award from Gold Coast Watercolor Society at our shows will be the "Emerging Artist Award". This award will encourage those artists who have never won an award with Gold Coast and will be worth \$200. Here's a listing of proposed exhibits for this year and next – get cracking *now* to be ready to enter!

November, 2006, Coral Springs;  
January 2007, ArtServe;  
March 2007, Broward County Main Library  
April 2007, Ann Kolb Center.

*Carol Thaw* won second place at ArtServe's Black History Exhibit!  
*Joan Steinmeier* and *Marcia Hirschy* helped the Sample-McDougal House Society paint twenty-two metal windmills for their fund raising roast in February.

*Bennie Edwards* won a Certificate from the Miramar City Hall for her painting during Black History Month



## Carol's Corner

This article is directed to all of you who missed the Members Only reception at the Schacknow Museum. Max Schacknow mailed 1000 invitations. Not all showed up, but over 150 attended. The food and wine were plentiful! I'm always hearing that you do not enter shows because the same people over and over win the awards. Well, not this time!

The newcomers were: 3<sup>rd</sup> place, Susanna Clemm; Honorable Mention, Carl Phillips; and People's Choice, Sandy Levy. Congratulations to all the winners!

### MEMBERS ONLY SHOW, SCHACKNOW MUSEUM

Best in Show	Dianne Nance
IDIOMA	
First Place	Lamonte Anderson
SANTORINI	
Harriet Mitchell Award	Joanna Bratt
JOE	
Third Place	Susanna Clemm
THREE PEARS TALKING	
HONORABLE MENTIONS:	
LIFE BEGINS	Carl Phillips
BETHESDA	Lawrence Daneke
WHITE HORSES	Jacob Leibovitz
JUDGES RECOGNITION:	
GOD DIDN'T MAKE LITTLE	
GREEN APPLES	Mary Blumberg
PEOPLE'S CHOICE:	
HURRY, I'M HUNGRY	Sandy Levi

### JUROR'S STATEMENT

Such a profusion of finely executed paintings left me with the daunting task of deciding which of 14 equally exquisite paintings should vie for awards. The considered requirement for this show along with the definition<sup>1</sup> of transparent<sup>2</sup> dictated that my judging must lie first with the ability of the artist to recognize and execute a *perfectly* transparent watercolor. I remain unwavering in my opinion that this criteria overshadows composition and artistic excellence as my primary objectives when judging your entries.

Check out the new changes that our webmaster, Carl Phillips has made to our website! There is a new option: 'GCWS at a Glance'! Carl will give a short presentation at our March meeting to help us access this option. Mark your calendar and learn from the master!  
[goldcoastwatercolorssociety.com](http://goldcoastwatercolorssociety.com)

## WELCOME! NEW MEMBERS!

**Sally B. Greve**  
9200 Holly Lane N  
Maple Grove, MN 55311  
763 416 4571

**Beverly Hoppe**  
1040 SW 52 Avenue  
Plantation, FL 33317  
954 587 9275

**Inez Hollander**  
1330 100 Street  
Bay Harbor Islands, FL 33154

**Kay Sandler**  
11549 Manorstone Lane  
Columbia, MD 21044



### IN MEMORY OF - JERRY SUMMERS

The man who was always ready and willing to help others and who led many South Florida Art organizations will be honored to be remembered by all those he helped with a Jerry Summers Memorial Award. Jerry was executive director, past president and signature member of Florida Watercolor Society, board member of the Cornell Museum of Art, former board member of Palm Beach Watercolor Society and past president of Lake Worth Art League. His vast experience with the art community will certainly leave a void that will not be easily replaced. If you wish to send an amount toward this award, please contact GCWS treasurer: Henriette Arnold, 101 SE 3 Avenue, #504 Dania, FL 33004 with the memo line noting Jerry Summers.

**DATED MATERIAL  
PLEASE DELIVER PROMPTLY**

OUR NEXT MEETING

Date: Tuesday, March 21, 2006  
 Time: 7:00 - 9:00 PM  
 Place: ArtServe Auditorium  
 1350 East Sunrise Blvd.  
 Fort Lauderdale, FL

*Gold Coast Watercolor Society  
 meets the third Tuesday of each month  
 at Art Serve from October through June.  
 Mark Your Calendar and ...  
 "Go For The Gold!"*



Membership is open to all persons interested in the art of watercolor.

Regular Member ..... \$30  
 Student Member (full-time art student) ..... \$15  
 Life Member ..... \$300

Make checks payable to Gold Coast Watercolor Society.

Mail to: Britt Silkey  
 323 NW 105th Street  
 Miami, FL 33150

Report any change of address or non-receipt of newsletter also to Britt.

Contributions to the newsletter are welcome, submit by the 20th of the month. If you want to submit an article or an item for member news, please type or print it and bring it to our monthly meeting, or mail to Marcia Hirschy, 2625 SE Fifth Court, Pompano Beach, FL 33062. Topics relevant to watercolor are welcome, i.e. product reviews, member news, awards, news of other watercolor clubs, art tips, techniques. Please submit photos of artists or their works; we will gladly return them in your stamped, self-addressed envelope.

**OFFICERS AND DIRECTORS**

President .....	Dorothy Olson	954-763-4462
1st Vice President .....	Jane Collin-Butch	954.370-2061
Assistant .....	Carol Thaw	954-389-0374
2nd Vice President .....	Nancy Herkert	954-252-0438
Recording Secretary .....	Cole Wolford	954-537-3310
Corresponding Secretary .....	Bill Brown	954-767-4751
		(c) 954-895-8593
Treasurer .....	Henriette Arnold	954-920-4574
Director .....	Bennie Edwards	954-735-0860
Director .....	Mary Blumberg	954-763-1653

**STANDING COMMITTEES**

Exhibitions .....	Carol Thaw	954-389-0374
	Mary Tillotson	954-983-0661
General Manager .....	Chauncey Nelson	561-596-8652
Membership .....	Britt Silkey	305-754-5456
Outreach Programs .....	Joyce Lihan	954-564-0426
	Nancy Leslie	954-941-8748
Demonstrations .....	Nancy Herkert	954-252-0438
Newsletter .....	Marcia Hirschy	954-941-8269
	coolqueenie22@bellsouth.net	
Printer .....	Paul Rainey	954-695-4818
Workshops .....	Mary Blumberg	954-763-1653
	Jennifer Kellum	954-434-4550
Paint Ins & Paint Outs .....	Carol Thaw	954-389-0374
	Dr. Karon Titus	
Hospitality for Exhibitions .....	Joyce Lihan	954-564-0426
Art Video Rentals .....	Charlene Hamilton	954-565-8582
Sunshine .....	Jean Ellerie	561-391-1962
Awards .....	Sara Dotto	954-463-2255
Publicity .....	Pat Cunning	954-563-5106
Scholarship .....	Joanna Bratt	954-525-6153
	Leona Whitlow	561-276-3370
Website .....	Carl Phillips	954-873-2531
	carlphillips@hotmail.com	
	Jane Collin-Butch	954-370-1286
Classified Ad Chairman .....	Edith Wagner	954-783-8410
Refreshments Chairman .....	Bennie Edwards	954-735-0860