



Sharon Pitts

Sharon Pitts was born in Chicago and holds a B.A. in Plastic and Graphic Arts from the University of Illinois. Her interests in the Arts have propelled her to study at the Pennsylvania Academy of Fine Arts, the Barnes Foundation and Montclair State University. Her career has centered mainly in the northeast where she teaches and exhibits regularly in the New York area.

Sharon has traveled the United States, Europe, Mexico and Japan and has often been influenced by her traveling. Since 1980, she has lived in New York and has concentrated on painting still-life ranging from cowboy boots to watches and jukeboxes, thence to beautiful florals – whatever captures her fancy!.

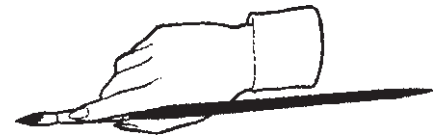
Take time to pull up her wonderful work online at www.sharonpitts.com before you attend our next meeting Tuesday, February 21, 2006 at ArtServe auditorium, 7:00 P.M.



Here is a sampling of Sharon's work.....



From the President's Sketchbook



I am in the midst of taking the Judy Morris workshop, and must say I am newly inspired. She also gave a wonderful demonstration at our January 17th meeting that was very well received. I now need the money and space to purchase and store all the new supplies she taught us to use.

As I mentioned at the last meeting, Chauncey Nelson has sold his home and is moving soon. We don't think we can replace him, but the Board has voted to give him a workshop for all the extra things he has done for us over the many years he has participated in GCWS. This is just a small token of our appreciation, Chauncey!

The Dale Chihuly (renowned Seattle glass blower artist) Exhibit is currently at Fairfield Tropical Gardens until May 31, 2006. We would like to get a busload of members and guests to go down in March or April. If we can get 20 people, we can enter as a group for \$20 each. At the last meeting, 11 signed up. The cost of the bus or van will depend on the number of people attending. If you have any interest in joining us for this fun trip, please e-mail me with your name and telephone number, ASAP. rdolson26@msn.com - Dot Olson

OPPORTUNITIES

Palm Beach Watercolor Society offers the 23rd Anniversary Open Juried Exhibition, March 1 – 26, 2006 at the Coral Springs Museum of Art. Entry form and check are due February 20. Contact Maureen Sopourn, 561 351 7748 for more information.

March 11, 2006 the Hillsboro Lighthouse Preservation Society will host a one day juried Art and Photo show in conjunction with the Tapestry, Rug and Hook Show at the Emma Lou Olson Civic Center in Pompano Beach from 9:30 to 7:30 p.m. The west wing has been reserved by the Lighthouse group. Any artist interested in exhibiting marine or lighthouse art is invited to participate. If you are participating, you need to volunteer an hour or so to help man the show on that day, too. Please call Marcia Hirschy, 954-941-8269 if you have from one to four eligible pictures to enter.

Dali On The Road will open March 3 at the Coral Springs Museum of Art. The show is a restropect of the four periods of Dali's work. Family Fun Day, held on the 2nd Saturday of each month, is on March 11th at 3 p.m. This is a fun opportunity to take the kids or grandkids to explore the world of art. In addition, classes for kids, teens, and adult start the week of March 13th. For more information about the Coral Springs Museum of Art, visit www.csmart.org or call 954-340-5000.

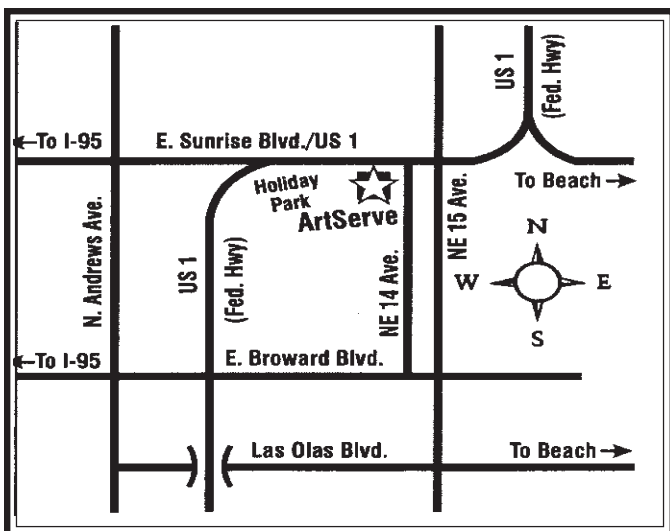
Palm Beach's Florida Flora and Fauna II will also be held at the American Orchid Society, Delray Beach from April 3 – May 1, 2006. Entry form and fee are due March 6, 2006. Contact Dodi Sikevitz , 561 736 8408 for additional information.

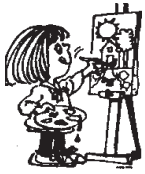
The Delray Art League will present their "Winter Interlude 2006" at the Delray City Hall, February 13 – March 24.

Broward Art Guild intake for "Human Image and Self Portrait" exhibit will be Sunday, March 19 from 12 – 4.

(Note: Any art groups who can meet our 20th of the month deadline may send in their prospectus and we will put a blurb in this column for them. Be aware that our newsletter will not be in members home until approximately the 15th of the following month, so check your entry dates, etc., so they are current. Please mail to Marcia Hirschy, 2625 SE 5 Court, Pompano Beach, FL 33062 – 6109.)

LAST CHANCE FOR MIAMI FRAMERS TO HAVE FREE LISTINGS IN OUR FRAMERS DISCOUNT BOX!





Carol's Corner

We're all tied up in 'nots' at this time! It takes a lot of hard work and planning (two to three years in advance to secure adequate space for hanging our shows) a juried exhibit. It is *not* always easy to find a venue large enough to hang our shows. The first show of the season is always the "I LOVE WATERCOLOR" show, an aqua media show that is open to all artists. Our "FLORIDA FOCUS: FORMS AND SHAPES" is another aqua media event. While our by-laws state that one exhibit must be a transparent watercolor "Members Only" show, we may have two aquamedia shows.

Judges are *not* easy to procure, either. The cost of running a show is *not* cheap (see our treasurer's article in this newsletter). GCWS's monetary awards are higher than any other local art group. We do a great reception – we do *not* ask members to supply the refreshments for the receptions.

My questions to our Gold Coast Watercolor Society membership are:

- Where are you?
- Why are you *not* participating in our shows?
- How can your board help you take advantage of your membership?

Please take a moment and tell me what you want. I would love to hear your opinions and have your input. Email me at Carolannart@comcast.net.

goldcoastwatercolorssociety.com

Check out our website!

Carl Phillips receives the credit for this!!

Refreshments Chair, Bennie Edwards, welcomes all volunteers who bring food and/or drinks to our meetings. Please call Bennie, 954-735-0360 ahead of time if you wish to be reimbursed. A receipt is necessary, too.

Volunteer of the Month

Those of you who attend our monthly general meetings have all met Britt Silkey. She is our new membership chairman who meets you at the door. What a job she has done! She has attacked the job of printing a new Roster as if she has been doing it for years. She has also updated and arranged our newsletter by zip codes so that the post office can more easily distribute our newsletter under the non-profit rules by the first three numbers of the zip codes.

Along with these organizational skills, she is a talented painter. A story that perhaps none of us can match, is that she won "Best In Show" at the first show she ever entered! We appreciate your time and talents, Britt. - Dot Olson

WHAT THE HECK ARE THEY TALKING ABOUT?

#6 CURATOR

A curator is the person who determines what artwork will be part of an exhibition or show. They may do part or all of the following: create or choose the show theme, choose artists/artwork for the show, invite particular artists to the show, hang the show, select award recipients, etc.

Some organizations allow proposals from "artist-curators." As an artist-curator you would be responsible for coming up with a show theme, and finding the artists – usually including yourself – whose work would be terrific for that show. *From smART Business by Kathy Gulrich*

MEMBERSHIP APPLICATION

Please mail this filled out form with a check for dues: \$30 annual or \$300 lifetime or \$15 student made payable to Gold Coast Watercolor Society and mail to Membership Chair: Britt Silkey, 323 NW 105th Street, Miami, FL 33150. 305-754-5456.

Name _____ Phone _____

Address _____ E-mail _____

City, State, Zip _____

Summer (if different) and dates _____

Please include a self-addressed envelope if you wish to receive a membership card.

?????

ASK ANNIE!

?????

Last month we told you with regret that “Annie” had retired. Little did we know how industrious and diligent she was. We are pleased to bring to you, all the way through April, more delightfully articulate and witty, as well as informative columns from our own “Annie.” Bernie comes with her. So glad retirement was delayed!

Dear Annie,

I’m new to watercolor and when I went to purchase my supplies, I became totally confused. Synthetic or natural hair brushes? tube, pan or liquid watercolors? It seems the stores have a dozen brands of watercolor paints to choose from and price comparisons would take an M.I.T. graduate to figure out as sizes ranged from 7.5 mil to 37 mil with four other sizes in between! I need help – where do I start?

Annie:

A friend of mine recently returned from Europe and showed me a vial of Rembrandt green. It seems someone discovered his paint formula and was manufacturing it and selling it. Obviously, Rembrandt didn’t have your problem. Even when Annie started doing watercolor there were only two major paint manufacturers that were heavily into advertising and sales. Paper selection likewise was simpler as there were less than a half dozen brands on the market.

I, too, have noticed an influx of new brands of paint that seem to surface almost monthly at the art supply stores. Technology has brought us the less

expensive synthetic hair brushes, Yupo “paper”, and watercolor canvases. Being new doesn’t always prove out! I remember 3M and their non-buckling fiberglass ‘paper’ and Grumbacher’s wood pulp paper that had the acidity removed. Neither made any money for their producers and both were gone from the market after a year.

As to paper, I use Arches brand for its reliability, but I always advocate finding the paper that works for you. Stick with it for your major paintings. I’ve found some success with synthetic watercolor brushes but I have a box full of all types, makes and brands. I prefer a brush with some ‘flip’ to it as a soft, limp brush is harder to control.

In paint selection, help is to be found in Michael Wilcox’s book entitled “Guide to the Best Watercolor Paints” published by Colour School Publications, P.O. Box 3518, London SE 24 9LW. Your friendly book store can probably get a copy for you or try online. It was first published in 1991 and revised in both 1993 and 1995. In it, he grades all colors of all paints manufactured by sixteen companies. He grades toxicity, permanency or light-fastness as well as an overall assessment based on the above factors including spreadability and intensity retention. A rating of five stars is the highest score with one star deemed unacceptable.

I know artists who use Wilcox’s book as a Bible when they purchase paints. You have nothing to lose by following suit.

WHERE DOES OUR MONEY GO?

- How much do our monthly meetings cost?
In December, GCWS paid ArtServe \$120; our demonstration was \$403.70; the hotel bill was \$109.99 and refreshments were \$121.87.
- How much do our shows cost?
The “I LOVE WATERCOLOR” show expenses were: judge, \$249.51 (out of town judges may cost more for transportation and housing); museum rental, \$250.00; awards, \$150.00. This did not include printing the prospectus or the brochure listing winners.
- How much are paint-in expenses?
Model fees and expenses were \$432.25. The room expense was included in the ArtServe bill above.

- How much are printing and postage expenses?
Postage for a month was \$150 plus a one time payment of \$150.00 to initiate our non-profit status. The monthly newsletter printing expense is \$370.00.

As you can see, we do use your money wisely. There are months when we spend more than we take in and others where we may collect more. We are a non-profit organization and at the end of the year, we usually come out about even. We also offer scholarships to deserving people each year with the amount depending on our net profit each year. We take in money for the workshops, but it doesn’t stay very long! If you have any more questions, please send them to the newsletter.

- Treasurer, Henriette Arnold

PRESS RELEASES

Barbara Boutin was featured in a local paper when she submitted a photo of her grandchildren on an unusual tree trunk that looked like they were actually riding on a reindeer! Inspiration often occurs in your own backyard.

The Las Olas magazine recently honored **Wilma Bulkin Siegel** as one of seven "Magnificent Artists" in the area. Her paintings are on display at the Fort Lauderdale Museum of Art. Her work stems from her medical background and she is seeking former flower children who lived in Broward or who lived here during that time. If you were/are one, contact her at 954-523-9204 for an interview.



CALENDAR 2006

FEBRUARY

- 1 Paint-In Avelena Kayne 561-737-0647
ArtServe Auditorium 9:30 - 2:00 p.m.
- 4 Schacknow Museum, take in 10 - 12 noon.
Pick-up unaccepted works, 3 - 4:00 p.m.
- 11 Schacknow Awards Reception 2 - 4:00 p.m.
- 15 GCWS Board Meeting, 2:00 p.m.,
All members are invited.
- 15 Paint-In Joe Green 561-495-6611
ArtServe Auditorium 9:30 - 2:00 p.m.
- 20-23 Sharon Pitts Workshop at Kiwanis Club
- 21 Gold Coast Watercolor Society Monthly Meeting,
ArtServe Auditorium 7 - 9 p.m. *Tuesday*
- 24 Florida Focus Pick-up 10:00 - 11:00 a.m. Please be prompt!
FIU 17195 Sheridan Street, Pembroke Pines, FL 33311

MARCH

- 1 Paint-In Eric Weiss 754-423-5998
ArtServe Auditorium 9:30 - 2:00 p.m.
- 4 Pick Up Schacknow 10 - 11a.m. Promptly please!
- 8 Paint-In Avelina Kayne 561-737-0647
ArtServe Auditorium 9:30 - 2:00 p.m.
- 15 GCWS Board meeting 2:00 p.m. ArtServe. All are welcome!
- 20-24 Pat Weaver Workshop, Kiwanis Club
- 21 Gold Coast Watercolor Society Monthly Meeting
ArtServe Auditorium 7 - 9 p.m. *Tuesday*

Please mark your calendars now in case your newsletter does not arrive in time!

FRAMERS DISCOUNTS

Carreno Art & Frame Inc.
40 E. Oakland Park Blvd.
Ft. Lauderdale, FL 33334
954-561-7364
15% Discount

Art and Frame Shop
1513 East Commercial Blvd.
Ft. Lauderdale, FL 33334
Contact: Lisa Dodero
954-771-7010
20% discount on all single custom framing, not including specials.
Large orders will be automatically discounted. Turn around time is usually just a few days if product is in stock.

House of 20,000 Frames
230 South Cypress Road
Pompano Beach, FL 33060
Contact: Pete Santipadri
954-782-5125
20% discount, fast turn around time, large in house stock supply. No credit cards.

Artful Framer
260 S. University Drive
Plantation, FL 33324
Contact: Patty and Steve Koch
1-888-340-4278
www.artfulframergallery.com
33% discount

Pearl's
1033 E. Oakland Park Blvd.
Ft. Lauderdale, FL 33334
Contact: Devonne Stots
954-564-5700
FtLMGR@PearlPaint.com
Offers a student discount on supplies if you bring in your GCWS card and the supply worksheet offered by the workshop leader. It's helpful for the workshop leader to give Pearl's advance notice of items not normally carried so they may be ordered in time for the workshop.

Use your GCWS card to show your membership to access these recommended framers.

Remember, when you are comparing frames, you need to compare "apples to apples". Some framers offer lighter weight frames or lighter mm. plexiglass than others do, so check on the specifics when you compare prices.



WORKSHOPS IN FULL SWING

Gold Coast workshops are in full swing and on a roll. Check out the following:

February 20 – 23, Sharon Pitts has only six more spots. Sharon is going to delight us with an interesting new way to paint flower still-lives. We will use fresh arrangements with natural lighting. Sharon’s specialty is designing borders and quirky but beautiful backgrounds.

March 20 – 24, Pat Weaver workshop had a cancellation and now has only one opening. Look for an accomplished artist/teacher who gives personal attention to each participant and an exciting experience in juicy watercolor.

April 8 & 9, Nancy Maas, room to grow. Nancy is fast becoming a “most popular watercolorist” in the Northeast. Her weavings of two to three paintings to create a single abstracted image is more than a curiosity; it is a *sales bonanza!* As an opportunity to be a part of an unusual and interesting week end, *Gold Coast is offering a 10% discount to anyone signing up for the April workshop who has registered for any previous workshop this year!*. This was effective as of the January members’ meeting.

Call or email Mary Blumberg or Jennifer Kellum to get more information or best of all SIGN UP!
Mary Blumberg, 954/763-1653, marybwatercolor@comcast.net, Jennifer Kellum, 954/434-4550, jkviolets@aol.com.

FLORIDA FOCUS: Forms and Shapes

- BEST IN SHOW*, Eleanor Clarke **Byzantine Moon**
- FIRST PLACE*, Laurence Danecke **Front and Center**
- SECOND PLACE*, Henriette Arnold **Too Close for Comfort**
- THIRD PLACE*, Susan Hanssen **When Sheep Go Bad**
- MERIT*, Jane Collin-Butch **Colorful Past**
- MERIT*, Chauncey Nelson **Galaxy Garden**
- MERIT*, Lois Ostrov **Upside Down 10**
- MERIT*, Cole Wolford **After the Storm**



Byzantine Moon by Eleanor Clarke

JUROR’S STATEMENT

I want to thank you for the opportunity of being the juror for this very strong exhibition. Thank you to the gracious volunteers, the tasty brunch and, of course, Mary, who is a delight.

An art juror’s task is never easy but I always feel it is an honor and one that excites me. I look for quality, originality, good composition, pictorial structure, excellence in execution and a personal statement from the painter.

To those whose works were not selected, I remind you that some work always has to be eliminated. It is not to be thought of as a rejection, but a time for you to push harder.

Thank you for sharing a bit of yourselves with me. Your painting is your journey. It is what we do as artists. We make it our interpretation to share with the viewer.

- Mary Alice Braukman, NWS

Classified Ads

A painter’s dream – at a great price! One five drawer file that will hold full sheets of watercolor paper, mat board, etc., \$250. Also, one wood French easel, half size, \$50.00. Lee Butler 954-647-0975

Lost and Found

Missing: one gray and black windbreaker jacket. Left at ArtServe at the GCWS December meeting. Delone Stone 954-763-1965

Send ad information to: Edith Wagner 954-783-8413 9800 Sunrise Lakes Blvd. #149 - 104 Sunrise, FL 33322- 6247 - \$5 for 18 words plus name and phone #. To be sure it’s included in the March newsletter, please get your info and check to Edith before the 15th of February.)

JUDY MORRIS WORKSHOP: SALT OF THE EARTH

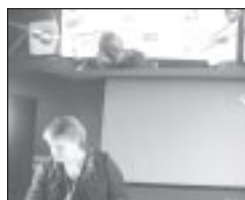
Did you know how many kinds of salt there are out there? You can find big salt, little salt, fine grain salt, ice cream salt, Kosher salt, table salt, - the list goes on. But, when you attend a workshop with Judy Morris from that little town of Medford, Oregon, you find out what you can do with it, besides making your food taste better, that is.



January's workshop with Judy Morris was an outstanding success. Her individualized technique for using salt images in watercolor paintings was astounding. Most watercolor artists have sprinkled a little salt (maybe more than a little) on a painting now and then. The texture achieved was predictable and recognizable. With learning the Morris technique, all that expectation of small star shapes went out the window. Students at this workshop learned the finesse and sensitivity necessary to make textures appear using salt and illusive background images that they had never experienced before. From a smooth velvety wash using a truly unorthodox technique, to dropping Kosher salt from a minimum of twelve inches above the paper, to singling out an appropriate stamping image for backgrounds, participants were mesmerized by Judy's style and personality.



It was that personality that won the week. Judy's identical twin sister, Jacque, came along for the fun of it, (but she was every bit as helpful). Through laughter and hard work, everyone learned, and achieved, and became better personal artists along the way.



"I didn't want to stop! We could go another week!"

"I enjoyed every moment of that week. Judy and her sister are perfectly delightful."

"Best workshop I have ever attended!"

"I was so impressed with the quality (and quantity for some) of the paintings at the end of the week critique. Unbelievable!"

Those are only a few of the comments heard throughout the week.

We are thankful to have had such a fine instructor and such a marvelous, industrious class. This must be what it means to "Go For The Gold!"

DATED MATERIAL

OUR NEXT MEETING

Date: Tuesday, February 21, 2006
 Time: 7:00 - 9:00 PM
 Place: ArtServe Auditorium
 1350 East Sunrise Blvd.
 Fort Lauderdale, FL

Gold Coast Watercolor Society
 meets the third Tuesday of each month
 at Art Serve from October through June.
 Mark Your Calendar and ...
"Go For The Gold!"



Membership is open to all persons interested in the art of watercolor.

Regular Member \$30
 Student Member (full-time art student) \$15
 Life Member \$300

Make checks payable to Gold Coast Watercolor Society.

Mail to: Britt Silkey
 323 NW 105th Street
 Miami, FL 33150

Report any change of address or non-receipt of newsletter also to Britt.

Contributions to the newsletter are welcome, submit by the 20th of the month. If you want to submit an article or an item for member news, please type or print it and bring it to our monthly meeting, or mail to Marcia Hirschy, 2625 SE Fifth Court, Pompano Beach, FL 33062. Topics relevant to watercolor are welcome, i.e. product reviews, member news, awards, news of other watercolor clubs, art tips, techniques. Please submit photos of artists or their works; we will gladly return them in your stamped, self-addressed envelope.

OFFICERS AND DIRECTORS

President	Dorothy Olson	954-763-4462
1st Vice President	Jane Collin-Butch	954.370-2061
Assistant	Carol Thaw	954-389-0374
2nd Vice President	Nancy Herkert	954-252-0438
Recording Secretary	Cole Wolford	954-537-3310
Corresponding Secretary	Bill Brown	954-895-8593
Treasurer	Henriette Arnold	954-920-4574
Director	Bennie Edwards	954-735-0860
Director	Mary Blumberg	954-763-1653

STANDING COMMITTEES

Exhibitions	Carol Thaw	954-389-0374
	Mary Tillotson	954-983-0661
General Manager	Chauncey Nelson	561-596-8652
Membership	Britt Silkey	305-754-5456
Outreach Programs	Joyce Lihan	954-564-0426
	Nancy Leslie	954-941-8748
Demonstrations	Nancy Herkert	954-252-0438
Newsletter	Marcia Hirschy	954-941-8269
Printer	Paul Rainey	954-695-4818
Workshops	Mary Blumberg	954-763-1653
	Jennifer Kellum	954-434-4550
Paint Ins & Paint Outs	Carol Thaw	954-389-0374
	Dr. Karon Titus	
Hospitality for Exhibitions	Joyce Lihan	954-564-0426
Art Video Rentals	Charlene Hamilton	954-565-8582
Sunshine	Jean Ellerie	561-391-1962
Awards	Sara Dotto	954-463-2255
Publicity	Pat Cunning	954-563-5106
Scholarship	Joanna Bratt	954-525-6153
	Leona Whitlow	561-276-3370
Website	Carl Phillips	954-873-2531
	carlphillips@hotmail.com	
	Jane Collin-Butch	954-370-1286
Classified Ad Chairman	Edith Wagner	954-783-8410
Refreshments Chairman	Bennie Edwards	954-735-0860